



## Evaluation Kit for PA162DK

### INTRODUCTION

Fast and easy breadboarding of circuits using the PA162DK is possible with the EK68 evaluation kit. The EK68 includes the EVAL68 board. The use of EVAL68 allows for a large area of breadboarding space to work with while allowing for the surface mount of PA162DK. The PA162DK amplifier may be surface mounted directly to the EVAL68. The EK68 is designed for mounting of the PA162DK without the need to solder attach the device terminals. The HS-33 heat sink is designed to hold the part in place while providing thermal control and electrical contact simultaneously. The obvious advantage is the ease of removal and replacement of the PA162DK as required. External connection to the evaluation board can be made via the terminals at the edge of the circuit board.

### PARTS LIST

Part#	Description	Quantity
EVAL68	Evaluation Board, PA162DK	1
PCE2055CT-ND	CAP, 47uF, 50V	4
OX7R105KWN	Cap, 200V, 1uF, Ceramic	4
HS33	Heat Sink	1
146510CJ	BNC Jacks	4
571-0100	Banana Jacks	4
571-0500	Banana Jacks	3
MS06	Mating Socket	4

Required assorted #4 hardware and thermal grease not included.

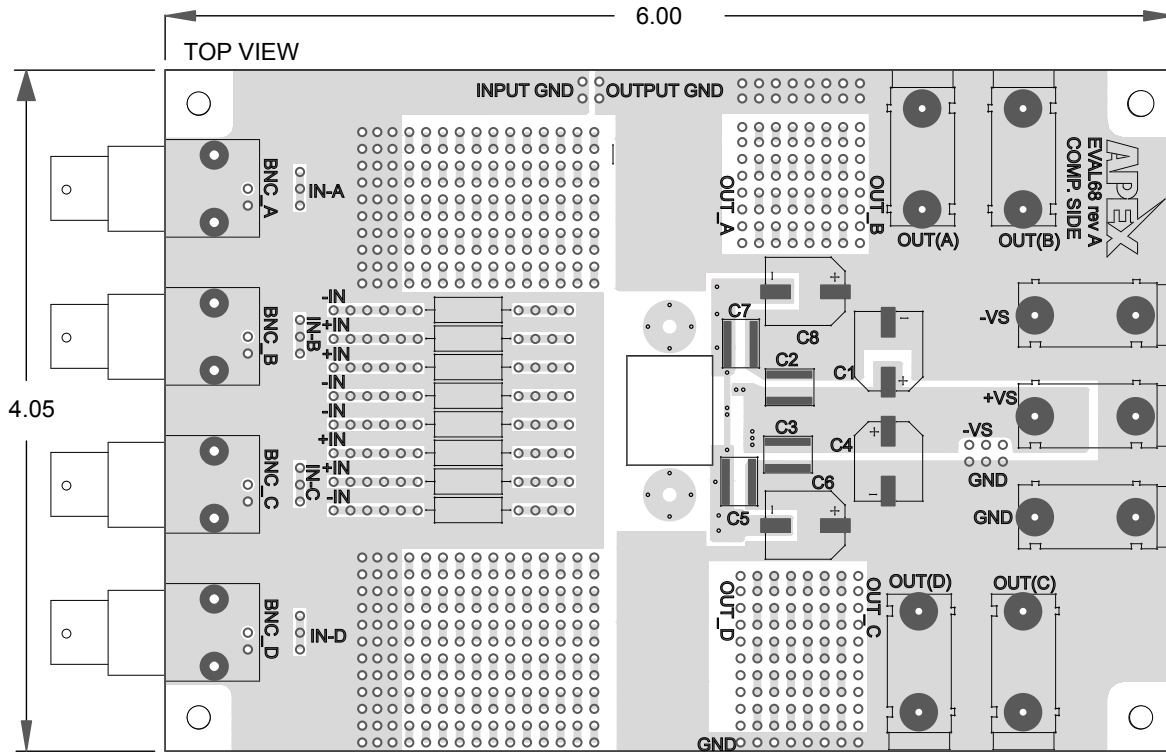
### BEFORE YOU GET STARTED

- All Apex amplifiers should be handled using ESD precaution.
- Review the Apex product datasheet and operating conditions.
- Always provide the appropriate heat sinking. Power dissipation must be considered to ensure maximum junction temperature ( $T_j$ ) is not exceeded.
- Always use adequate power supply bypass capacitors, Apex recommends at least 10 $\mu$ F per amp of output current.
- Do not change connections while the circuit is powered
- In case -Vs is disconnected before +Vs, a diode between -Vs and ground is recommended to avoid damage.
- Initially set all power supplies to the minimum operating levels allowed in the product datasheet.
- Check for oscillations up to and above the unity gain bandwidth of the amplifier.

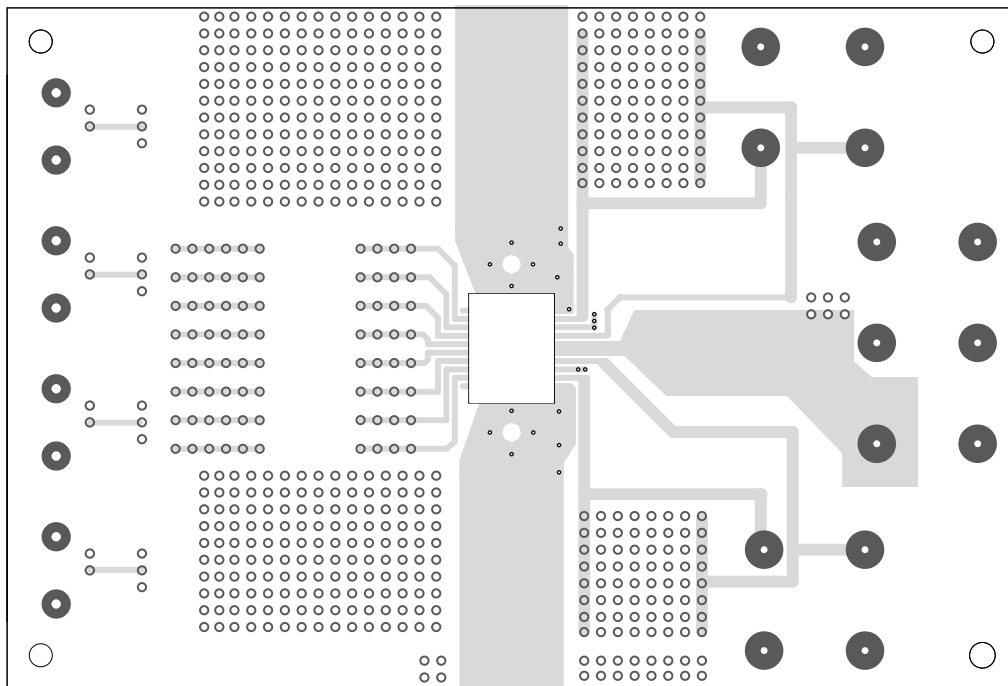
### ASSEMBLY

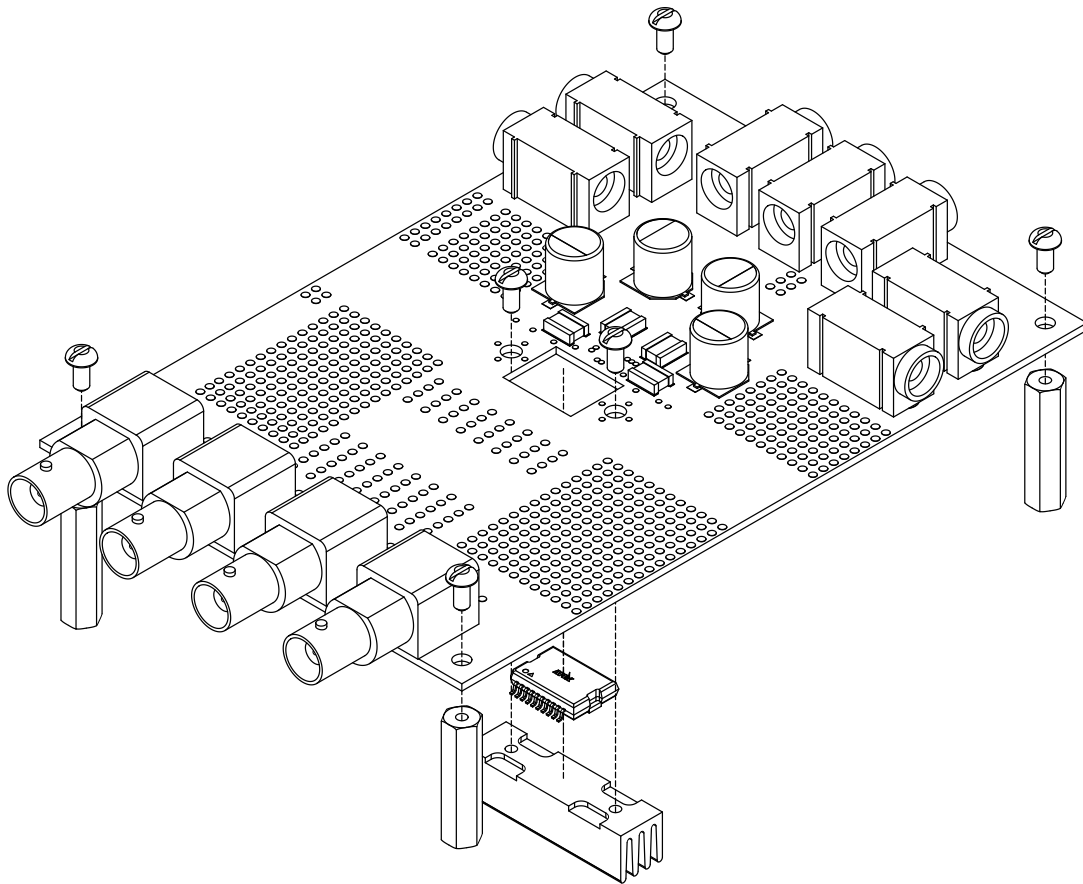
The PA162DK and capacitors are surface mount components and should be assembled to the EVAL68 using surface mount processes. Solder paste may be dispensed or screen-printed on the DUT pads. If a solder reflow furnace is not available, a heat plate capable of solder reflow temperatures may be used. The heat slug on the back of the PA162DK provides maximum heat dissipation capabilities when in direct contact to the heat sink. Thermal grease should be used when mounting the heat sink to the evaluation board. Mating sockets strips are provided to facilitate adding additional components as required. Please use care when handling and assembling the PA162DK. Make certain that the package pin to pad alignment is correct and that the pins are seated on each pad. The PA162DK heat slug and heat sink must be electrically connected to the most negative power supply potential (-Vs).

NOTE: All grounds must be tied together on the EVAL68 board.



BOTTOM VIEW





## CONTACTING CIRRUS LOGIC SUPPORT

For all Apex Precision Power product questions and inquiries, call toll free 800-546-2739 in North America.

For inquiries via email, please contact [tucson.support@cirrus.com](mailto:tucson.support@cirrus.com).

International customers can also request support by contacting their local Cirrus Logic Sales Representative.

To find the one nearest to you, go to [www.cirrus.com](http://www.cirrus.com)

### IMPORTANT NOTICE

Cirrus Logic, Inc. and its subsidiaries ("Cirrus") believe that the information contained in this document is accurate and reliable. However, the information is subject to change without notice and is provided "AS IS" without warranty of any kind (express or implied). Customers are advised to obtain the latest version of relevant information to verify, before placing orders, that information being relied on is current and complete. All products are sold subject to the terms and conditions of sale supplied at the time of order acknowledgment, including those pertaining to warranty, indemnification, and limitation of liability. No responsibility is assumed by Cirrus for the use of this information, including use of this information as the basis for manufacture or sale of any items, or for infringement of patents or other rights of third parties. This document is the property of Cirrus and by furnishing this information, Cirrus grants no license, express or implied under any patents, mask work rights, copyrights, trademarks, trade secrets or other intellectual property rights. Cirrus owns the copyrights associated with the information contained herein and gives consent for copies to be made of the information only for use within your organization with respect to Cirrus integrated circuits or other products of Cirrus. This consent does not extend to other copying such as copying for general distribution, advertising or promotional purposes, or for creating any work for resale.

CERTAIN APPLICATIONS USING SEMICONDUCTOR PRODUCTS MAY INVOLVE POTENTIAL RISKS OF DEATH, PERSONAL INJURY, OR SEVERE PROPERTY OR ENVIRONMENTAL DAMAGE ("CRITICAL APPLICATIONS"). CIRRUS PRODUCTS ARE NOT DESIGNED, AUTHORIZED OR WARRANTED TO BE SUITABLE FOR USE IN PRODUCTS SURGICALLY IMPLANTED INTO THE BODY, AUTOMOTIVE SAFETY OR SECURITY DEVICES, LIFE SUPPORT PRODUCTS OR OTHER CRITICAL APPLICATIONS. INCLUSION OF CIRRUS PRODUCTS IN SUCH APPLICATIONS IS UNDERSTOOD TO BE FULLY AT THE CUSTOMER'S RISK AND CIRRUS DISCLAIMS AND MAKES NO WARRANTY, EXPRESS, STATUTORY OR IMPLIED, INCLUDING THE IMPLIED WARRANTIES OF MERCHANTABILITY AND FITNESS FOR PARTICULAR PURPOSE, WITH REGARD TO ANY CIRRUS PRODUCT THAT IS USED IN SUCH A MANNER. IF THE CUSTOMER OR CUSTOMER'S CUSTOMER USES OR PERMITS THE USE OF CIRRUS PRODUCTS IN CRITICAL APPLICATIONS, CUSTOMER AGREES, BY SUCH USE, TO FULLY INDEMNIFY CIRRUS, ITS OFFICERS, DIRECTORS, EMPLOYEES, DISTRIBUTORS AND OTHER AGENTS FROM ANY AND ALL LIABILITY, INCLUDING ATTORNEYS' FEES AND COSTS, THAT MAY RESULT FROM OR ARISE IN CONNECTION WITH THESE USES.

Cirrus Logic, Cirrus, and the Cirrus Logic logo designs, Apex and Apex Precision Power are trademarks of Cirrus Logic, Inc. All other brand and product names in this document may be trademarks or service marks of their respective owners.